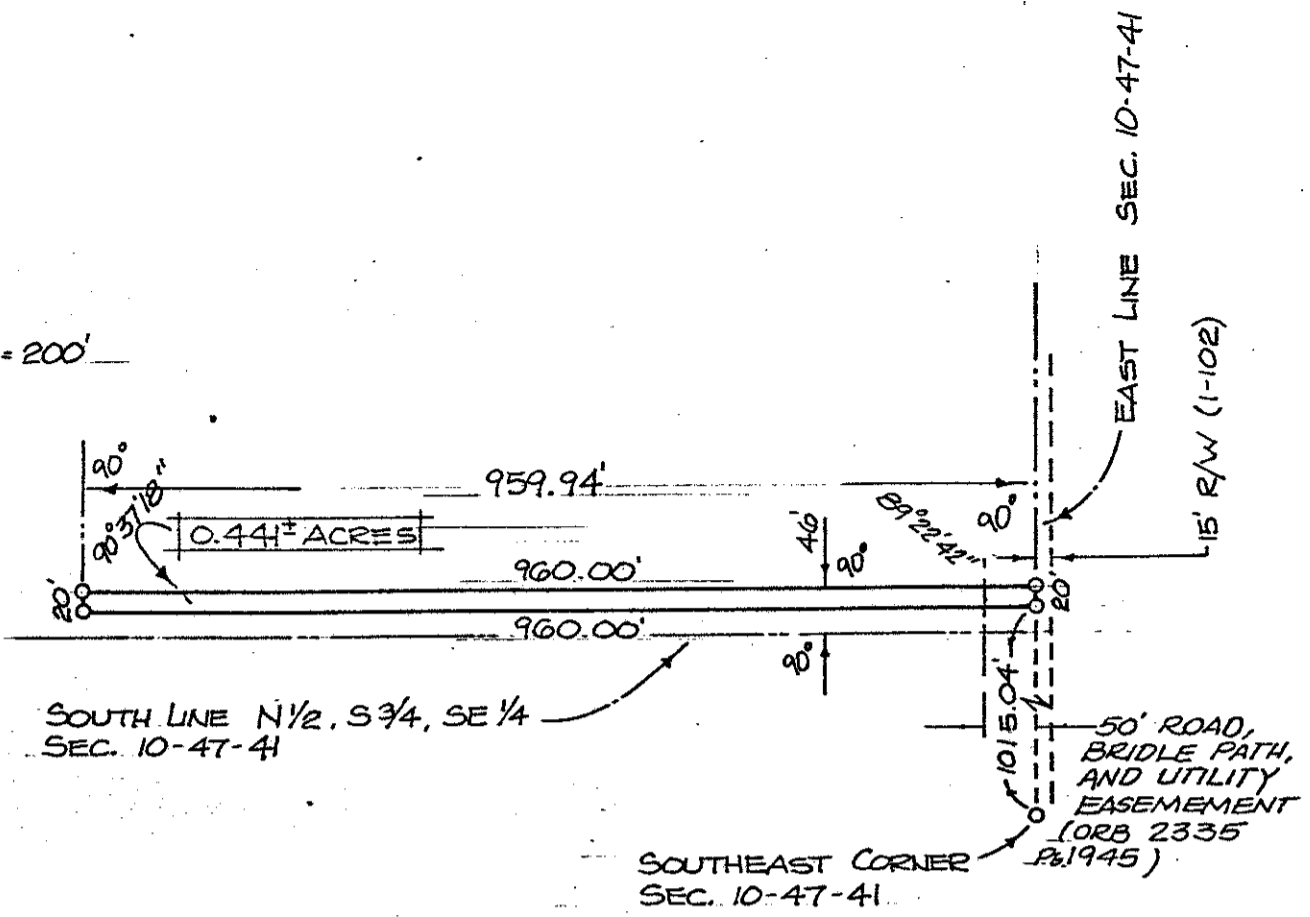
  
 SCALE 1" = 200'




DESCRIPTION

ROAD R/W ACCESS TO PARCELS FC AND FD

THE EAST 959.94 FEET OF THE NORTH 20 FEET OF THE SOUTH 46 FEET OF THE NORTH 1/2 OF THE SOUTH 3/4 OF THE SOUTHEAST 1/4 OF SECTION 10, TOWNSHIP 47 SOUTH, RANGE 41 EAST. SAID LANDS LYING AND BEING IN PALM BEACH COUNTY, FLORIDA.

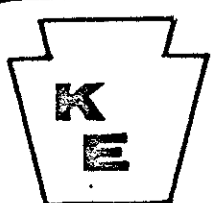
I HEREBY CERTIFY THAT THE ABOVE LEGAL DESCRIPTION IS TRUE AND CORRECT TO THE BEST OF MY KNOWLEDGE AND BELIEF...



WILLIE G. GATO, JR.  
 REG. LAND SURVEYOR #1638  
 STATE OF FLORIDA

B & T OF FLORIDA  
 #44961E  
 10/4/78

ur0092.igr  
 ROSE AND ASSOCIATES PG3



**Keystone Engineering Inc.**

Land Planners.....Engineers.....Land Surveyors

6301 N.W. 9th Avenue, Suite B, Fort Lauderdale, Florida 33309

Phone (305) 772-6330